

3. COLLABORATIONS & MOUs

a. Chinese University of Hong Kong

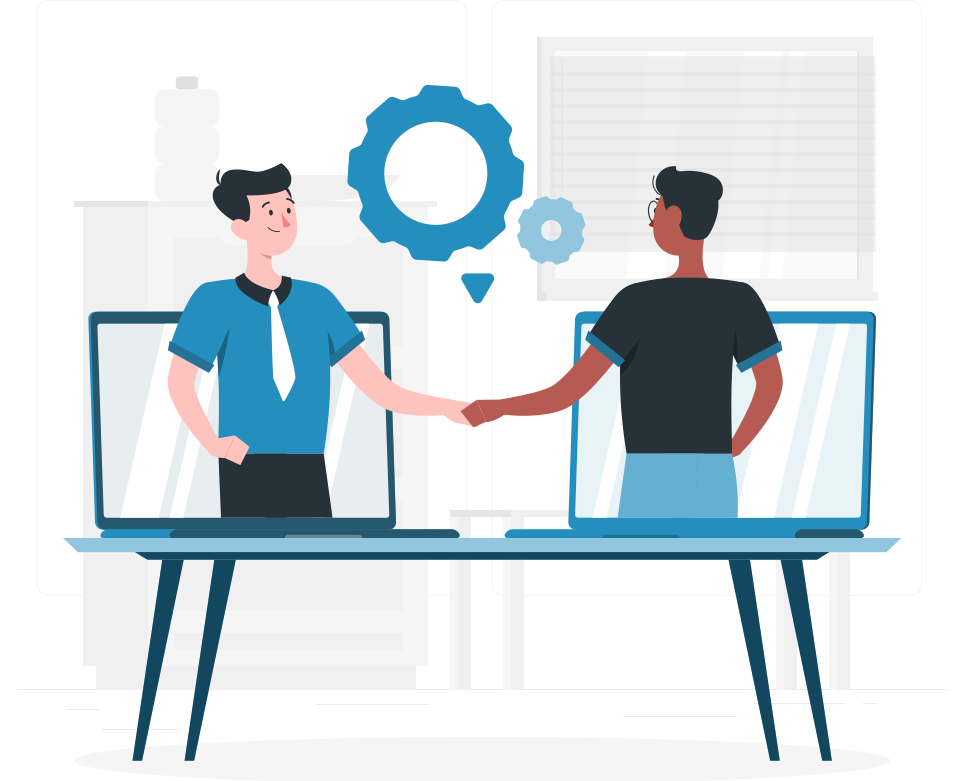
Chinese University of Hong Kong's Location-based learning systems available for managing the projects and field-based activities.

b. Hong Kong Baptist University

Hong Kong Baptist University's augmented reality-based learning systems for various disciplines. **MOUs signed** with these Universities.

c. Delhi ALS

Tie-up with **Delhi ALS** for Civil Service coaching.



MEMORANDUM OF UNDERSTANDING

Between

(A) Professor Paul Lam, Associate Professor, Centre for Learning Enhancement And Research, The Chinese University of Hong Kong, Shatin, Hong Kong SAR ("Party A");

And

(B) Dr. Binu Thomas, Associate Professor, Department of Computer Applications, Coordinator - Internal Quality Assurance Cell (IQAC), Joint Director Marian Institute for Innovative Teaching-Learning and Evaluation (MIITLE), Marian College Kuttikkanam (Autonomous) ("Party B")

This Memorandum of Understanding ("MOU") is entered into this 16th day of May 2019, by and between the Professor Paul Lam and Dr. Binu Thomas. The two Parties propose a joint research project on "The Campus-wide Implementation of Student Response System for Teachers and Students in India and Hong Kong" with an aim to study the similarities and differences in the acceptance of student response system as a teaching and learning tool in the two cultures.

The Parties have consented to sign this MOU to document the Parties' consensus about the proposed deliverables, the work plan, the initial project members as detailed below.

NOW IT IS HEREBY AGREED AS FOLLOWS:

1. OBLIGATIONS OF THE PARTIES

1.1. The Parties agree to work together in the true spirit of partnership to ensure that there is a united visible and responsive leadership of the campus-wide implementation of student response system as well as the research on usage.

2. GOALS AND OBJECTIVES

2.1. The parties agree to solicit user data related to use of student response system on a campus-wide level through study of the user logs and issuing of teacher and student surveys. The purpose is to arrive at understanding of similarities and differences between use of such systems in both Indian and Chinese cultures. The studies lead to research outputs for both parties.

3. COOPERATION

3.1. - The activities and services for the Project shall include but not limited to:

1) Party A agreed to provide Party B teacher and student feedback questionnaire templates for administration in India. Party B administers the instruments in India and handed over the data to Party A for further processing.

1

Chinese University of Hong Kong

MEMORANDUM OF UNDERSTANDING

The Memorandum of Understanding ("MOU") is made and entered into by and between

Marian Institute for Innovative Teaching-Learning and Evaluation ("MIITLE") of Marian College Kuttikkanam, India (MCK), a professional body who can make decisions about learning and teaching issues and all other related matters of education at MCK, and

Centre for Holistic Teaching and Learning ("CHTL"), Hong Kong Baptist University, Hong Kong, China ("HKBU"), a corresponding department at HKBU with substantial expertise and experience in implementing teaching and learning policies.

WHEREAS, MIITLE wishes to establish linkage and collaborate with CHTL on initiatives mutually valuable and beneficial to the two parties.

It is hereby **AGREED** as follows:

1. Purpose
The purpose of this MOU is to establish certain understanding of the parties in relation to the collaboration between the parties, in order to promote professional development and scholarship of teaching and learning.

2. Definitions

2.1 **Intellectual Property Rights** means any rights of, including but not limited to, patents, knowhow, confidential information, trade secrets, rights in database, designs, copyrights, trademarks, service marks, trade names, logos and the goodwill associated therewith and all rights or forms of protection having equivalent or similar effect (whether registered, unregistered or unregistrable) which may subsist anywhere in the world.

2.2 **Project Information** means the information relating to any teaching and learning projects involved, including but not limited to, knowledge, documents, computer materials and programs and any other relevant information, whether confidential or not.

3. Collaboration

3.1 CHTL and MIITLE shall collaborate on activities deemed pertinent in promoting professional development and scholarship of teaching and learning. The collaboration shall include, but not limited to:

3.1.1 Interchange and/or exchanges of staff and students;
3.1.2 Exchange of the Project information, to an extent herein under Clause 5.2;
3.1.3 Joint research publications;
3.1.4 Collaborative development of online courses for students; and
3.1.5 Development of teaching and learning resources solely for sharing between the two parties.

Page 1 of 2

Hong Kong Baptist University

INDIA NON JUDICIAL

Government of National Capital Territory of Delhi

e-Stamp

संशोधन प्रकल्प

Certificate No.	: IN-DL4303482051716R
Certificate Issued Date	: 12-Feb-2019 05:36 PM
Account Reference	: IMPACC (10) (899909) DELHI DL-DLH
Unique Doc. Reference	: SUBIN-DL/DL004030077026342808R
Purchased by	: THE INSTITUTION OF ENGINEERS INDIA
Description of Document	: Article-35(C) (e-sign, filed deed upto 1 year)
Property Description	: Not Applicable
Consideration Price (Rs.)	: 0
Stamp Duty (Rs.)	: 20
Stamp Duty Amount (Rs.)	: 20 (Twenty only)

First Party : THE INSTITUTION OF ENGINEERS INDIA
Second Party : ALS SATELLITE EDUCATION PRIVATE LIMITED
Stamp Duty Paid By : THE INSTITUTION OF ENGINEERS INDIA

Please write or type below this line.....

Franchise partner Agreement (ALS Satellite Education Private Limited)

Location: Kuttikkanam P.O, Idukki District, Kerala

Centre Address : Marian College, Kuttikkanam, Kuttikkanam P.O, Idukki District, Kerala

Parties : ALS Satellite Education Private Limited & The Principal, Marian College, Kuttikkanam

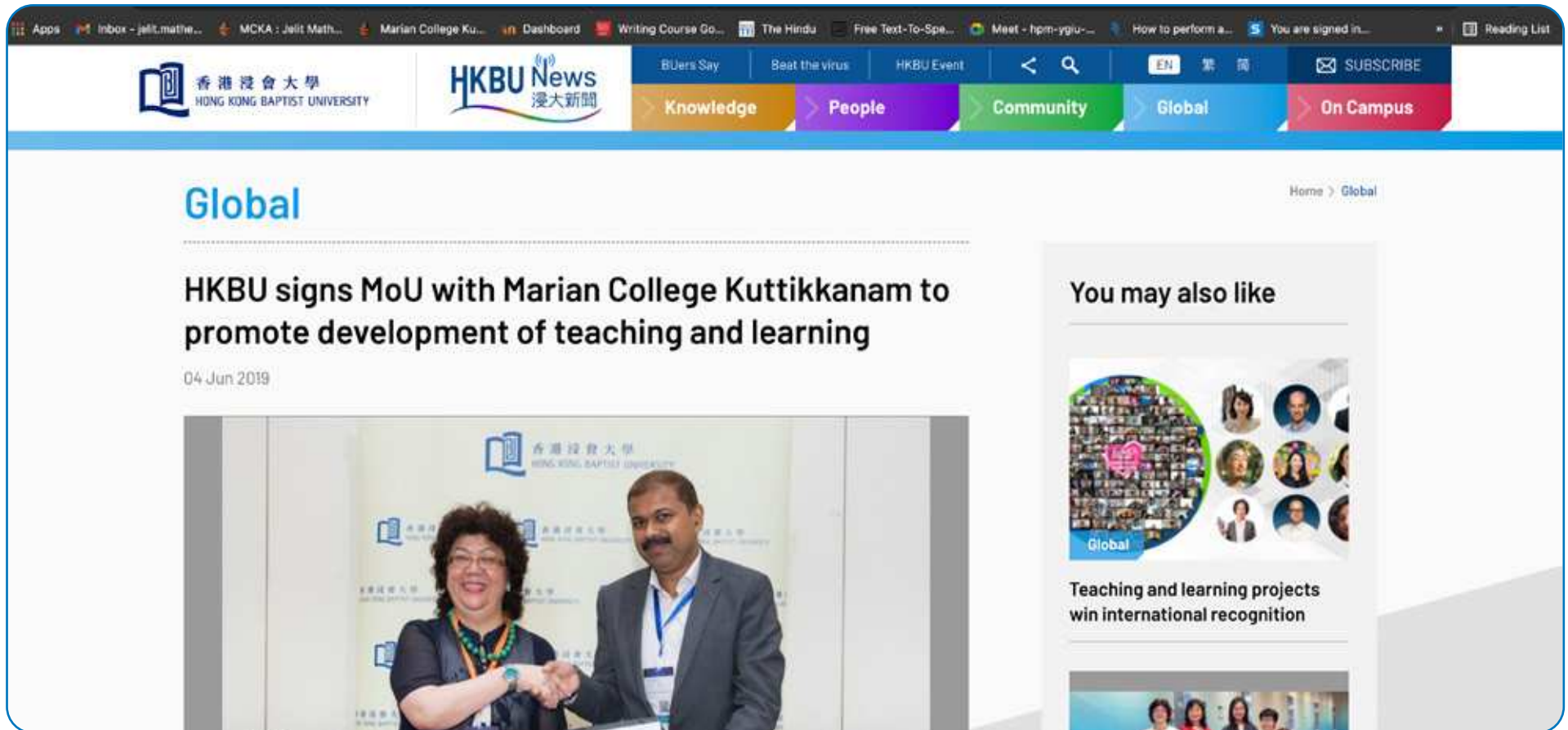
Principal
Marian College, Kuttikkanam

NEW DELHI

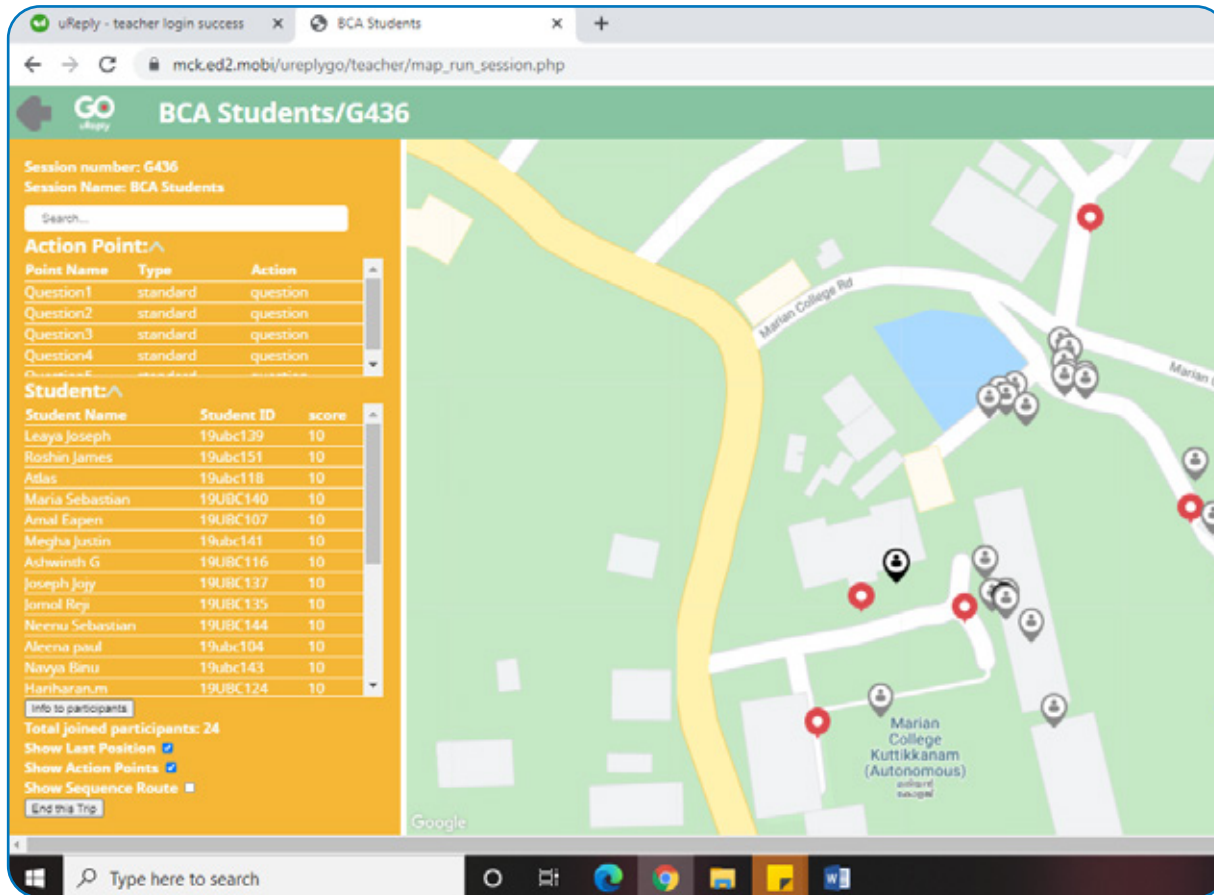
PTE/MAD (65 51)

Statutory Alert: This document is generated by the Government of National Capital Territory of Delhi. It is valid only if it is verified at 'www.e-stamp.delhi.gov.in' according to the instructions on the Certificate and as per the instructions on the website of the Government of National Capital Territory of Delhi. The Government of National Capital Territory of Delhi is not responsible for any loss or damage caused by the use of this document.

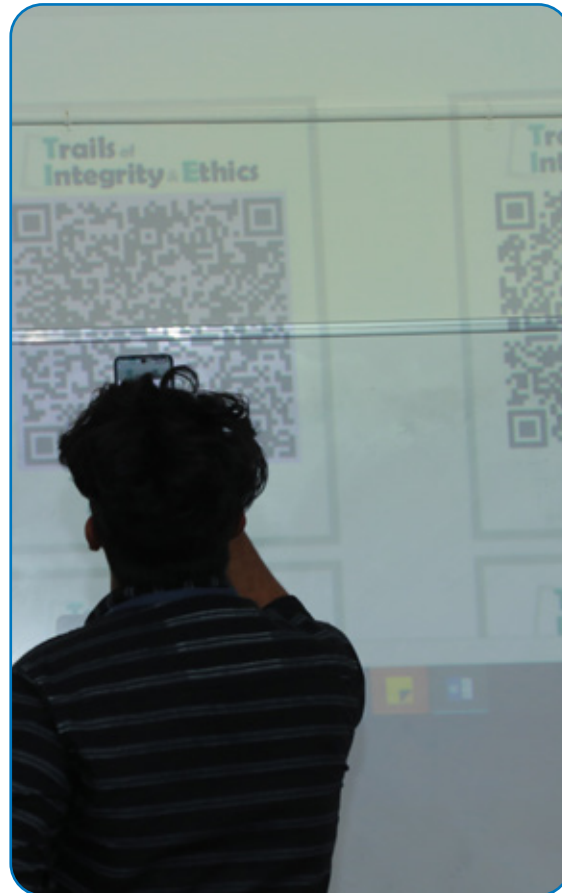
Delhi ALS



a HKBU SIGNS MOU | Director of CHTL Dr Eva Wong (left) signs MOU with Dr Binu Thomas, Marian College Kuttikkanam



Faculty using U-Reply



Hong Kong Baptist University's AR Learn